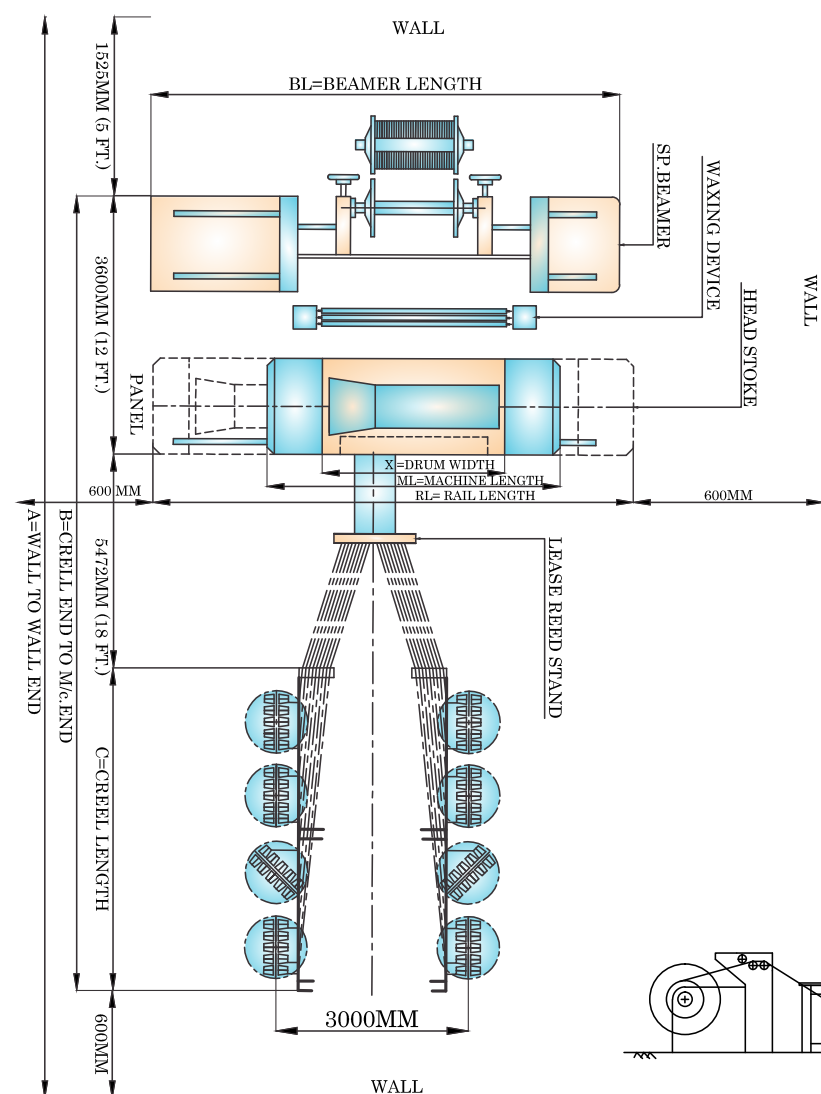




**DYNATECH**

LAY OUT FOR SECTIONAL WARPING MACHINE & CREEL



The date and illustration in the document correspond to the technical level at the time of printing and do not constitute a part of any offer. The right to make alternations is reserved.

SUITABLE FOR BF. 800MM, 9 DEGREE

M/c SIZE	X	ML	RL	SW	BL
2200	3300	5000	8000	9200	5000
2800	3900	5600	9000	10200	5600
3000	4100	5800	10000	11200	5800
3600	4700	6400	12000	13200	6400
4000	5100	6800	12500	13700	6800

CREEL 240MM PITCH (8 DECK)

END	A	B	C
384	17197	15072	6000
512	19197	17072	8000
640	21197	19072	10000
768	23197	21072	12000
896	25197	23000	14000

SUITABLE FOR BF. 1000MM, 9 DEGREE

M/c SIZE	X	ML	RL	SW	BL
2200	3750	5450	8450	9650	5450
2800	4300	6150	9450	10650	6150
3000	4550	6250	10450	11650	6250
3600	5150	6850	12450	13650	6850
4000	5550	7250	12950	14150	7250

CREEL 280MM PITCH (8 DECK)

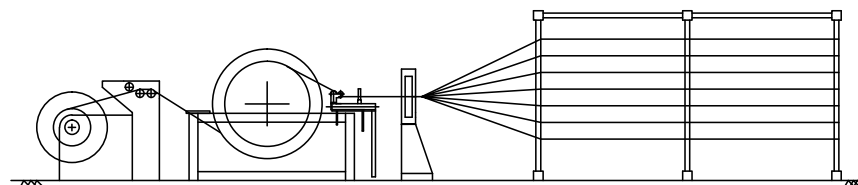
END	A	B	C
384	18157	16032	6960
512	20477	18352	9280
640	22797	20672	11600
768	25117	22992	13920
896	27437	25312	16240

SUITABLE FOR BF. 1000MM, 11 DEGREE

M/c SIZE	X	ML	RL	SW	BL
2200	3500	5200	8200	9400	5200
2800	4150	5900	9200	10400	5900
3000	4200	6000	10200	11400	6000
3600	4900	6600	12200	13400	6600
4000	5300	7000	12700	13900	7000

CREEL 300MM PITCH (7 DECK)

END	A	B	C
252	16837	14712	5640
336	18717	16592	7520
420	20597	18472	9400
504	22477	20352	11280
588	24357	22232	13160



SINCE: 1988

Sectional Warpers  
Direct Warpers  
Warping Creels



**DYNATECH**

**DYNAMIC TECHNOLOGY**

PLC & Servo Based Automation Project

F-1, F-2, Sidhadinayak Ind Estate, Adinath Nagar Road,  
G.I.D.C. Odhav, Ahmedabad-382415 Phone : 079-22970419

E-mail : dyna\_tech1@yahoo.in, patelmanishbhai@yahoo.in

Website : www.dynatechtechnology.com

**DYNATECH**

www.dynatechtechnology.com



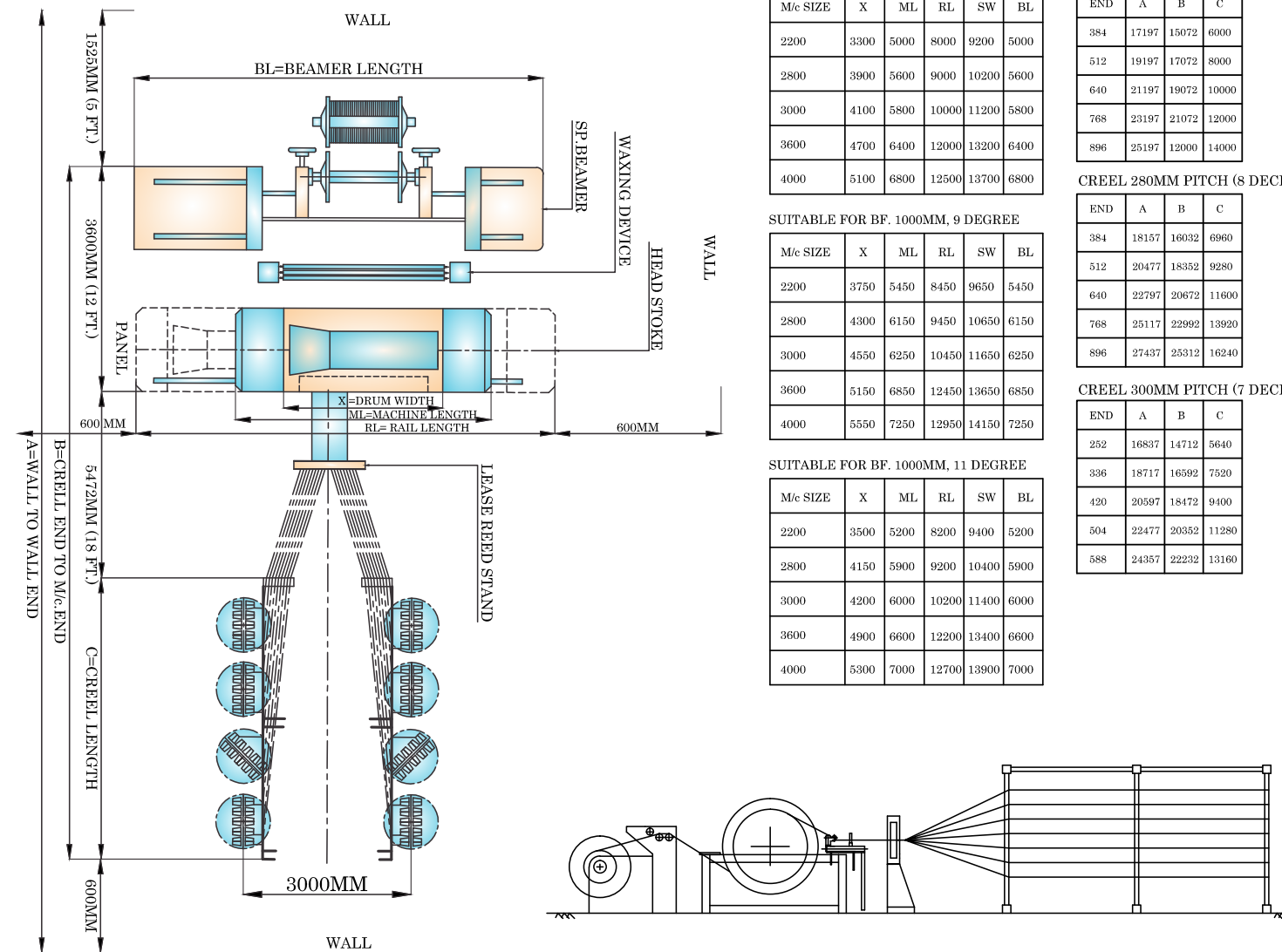


**DYNATECH**

**SINCE: 1988**

**Sectional Warpers  
Direct Warpers  
Warping Creels**

**LAY OUT FOR SECTIONAL WARPING MACHINE & CREEL**



SUITABLE FOR BF. 800MM, 9 DEGREE

M/c SIZE	X	ML	RL	SW	BL
2200	3300	5000	8000	9200	5000
2800	3900	5600	9000	10200	5600
3000	4100	5800	10000	11200	5800
3600	4700	6400	12000	13200	6400
4000	5100	6800	12500	13700	6800

CREEL 240MM PITCH (8 DECK)

END	A	B	C
384	17197	15072	6000
512	19197	17072	8000
640	21197	19072	10000
768	23197	21072	12000
896	25197	23000	14000

SUITABLE FOR BF. 1000MM, 9 DEGREE

M/c SIZE	X	ML	RL	SW	BL
2200	3750	5450	8450	9650	5450
2800	4300	6150	9450	10650	6150
3000	4550	6250	10450	11650	6250
3600	5150	6850	12450	13650	6850
4000	5550	7250	12950	14150	7250

CREEL 280MM PITCH (8 DECK)

END	A	B	C
384	18157	16032	6960
512	20477	18352	9280
640	22797	20672	11600
768	25117	22992	13920
896	27437	25312	16240

SUITABLE FOR BF. 1000MM, 11 DEGREE

M/c SIZE	X	ML	RL	SW	BL
2200	3500	5200	8200	9400	5200
2800	4150	5900	9200	10400	5900
3000	4200	6000	10200	11400	6000
3600	4900	6600	12200	13400	6600
4000	5300	7000	12700	13900	7000

CREEL 300MM PITCH (7 DECK)

END	A	B	C
252	16837	14712	5640
336	18717	16592	7520
420	20597	18472	9400
504	22477	20352	11280
588	24357	22232	13160

The date and illustration in the document correspond to the technical level at the time of printing and do not constitute a part of any offer. The right to make alternations is reserved.



**DYNATECH**

**DYNAMIC TECHNOLOGY**

PLC & Servo Based Automation Project

F-1, F-2, Sidhadinayak Ind Estate, Adinath Nagar Road,  
G.I.D.C. Odhav, Ahmedabad-382415 **Phone** : 079-22970419

**E-mail** : dyna\_tech1@yahoo.in, patelmanishbhai@yahoo.in

**Website** : dynatechtechnology.com

**DYNATECH**



**COMPANY PROFILE**



**Salient Features:**

- Fixed cone, Metallic drum, dynamically balanced. Drum Circumferences standard 3.0 mtr.
- Triple Servo System (All Drives and Servo motors are Panasonic - Japan) for
- Stepless system for movement of warping table and synchronous speed of drum and table by ball screw.
- Second Servo for withdrawal of evener roller and reed as per the built up yarn.
- Third Servo for machine traverse during warping & beaming.
- Evener warp sheet is maintained by the pneumatic press roller across width of the yarn.
- Liquid wax or oil device 3 roller system circulation system with tank.
- Static eliminator on traverse table.
- Safety device with optical sensing for instant stopping.
- For more Accuracy of warp table, we provide Line Guides.
- Printer for various data information.
- Linear Guides to ensure the accurate traverse of warp table.
- Uniform beam tension automatically maintained & displayed on screen from start/finish of beam as per set value by load cell & proportional control valve.

**Optional Attachments:**

- Electronic static eliminator on Lease Reed Stand and Cone Creel.
- Extra Section tension control unit for yarn sheet, of sheet, between Creel and Lease Reed for Industrial yarn.
- Laser sensor for on line auto pitch with built-up yarn section.



## AUTHORISED DISTRIBUTORS FOR TECHMECH MACHINES



### Salient Features:

- Vibration free steel fabricated structure.
- Quick positioning of new cones by turning package frame to 180 degree with locking facility by foot pedal.
- Tensioner assembly & cone package are perfectly aligned in line.
- Distance between cone & tension mounting frame adjustable easily by hand wheel operations.
- Yarn tension controlled row wise manual.
- Re-creeling is possible during warping operations.
- Refer for stop motion shown separately.



## AUTOMATION FOR SECTIONAL WARPING MACHINE

\* WE DONE THE AUTOMATION OF THE SECTIONAL WARPING MACHINE & DIRECT WARPING MACHINE.

\* ITS INCLUDE FOLLOWING:

- 1) ACCURATE LENGTH CALCULATION
- 2) SPEED CALCULATION.
- 3) PRECISE SERVO MOVEMENT.
- 4) USER FRIENDLY HMI PROGRAM.
- 5) EASY TO OPERATE FOR MACHINE OPERATOR.
- 6) AUTOMATIC BEAM TENSION CONTROL USING LOAD CELL.
- 7) BEAM & DATE WISE HISTORY DATA STORAGE IN USB.
- 8) ACCURATE SYNCHRONISING OF THREE SERVO IN TRIPPLE SERVO MACHINE.

## TECHNOLOGY UPGRADATION FOR SECTIONAL & DIRECT WARPING MACHINE

\* WE DO THE PROJECT OF VARIOUS MAKE SECTIONAL & DIRECT WARPING MACHINE LIKE PRASHANT GAMATEX, BENNIGER, RABATEX, HAKOBA, YUNG HUNG, ETC....

\* OUR MAJOR PROJECT DONE BY US IN PAST WAS:

- 1) ASHIMA SPINFAB, AHMEDABAD. ( BENNIGER DIRECT & SECTIONAL WARPING)
- 2) AHINSA SYNTHETICS, BHILWARA. ( RABATEX SECTIONAL WARPING)
- 3) S R INFRASTRUCTURE, BARODA.
- 4) SWADESHI TEXTILE MILL, SARIGON. ( PRASHANT GAMATEX WARPING)
- 5) KAIYAL SYNTHETICS, CHHATRAL. ( PRASHANT GAMATEX WARPING)
- 6) T A TEXTILE, SURAT. ( KORIA MAKE SECTIONAL WARPING MACHINE)
- 7) SHARMAN UDYOG, KUNDALI. ( TECH MECH WARPING MACHINE)
- 8) RAVI TEXTILE, SURAT. ( RABATEX WARPING MACHINE)
- 9) GIRIRAJ TEXTILE, SURAT. ( PRASHANT GAMATEX SECTIONAL WARPING)
- 10) DHARMESH TEXTILE, SURAT. ( RABATEX SECTIONAL WARPING)



## STOP MOTION

### FEATURE:-

- 1) PHOTOELECTRIC SENSOR, INDICATION OF BROKEN THREAD OF RESPECTIVE ROW DISPLAYED BY LED.
- 2) BOTH SIDE INDICATION REAR SIDE LED INDICATOR.
- 3) EASY OF OPERATION DUE TO PCB EASILY REMOVED VERY FAST QUICK ACTION IN CASE OF THREAD BREAK.
- 4) YARN BREAKAGE LEVERS FOR LINE AND COARSE YARN.
- 5) INDIVIDUAL LOCKING OF EACH LEVER IN CASE NOT IN USE.
- 6) INDIVIDUAL ROW CAN BE SKIPPED FOR OPERATION OR NOT IN OPERATION.
- 7) FRAME STRUCTURE WILL BE ALLUMINIUM MATERIAL.
- 8) SENSITIVITY RANGE OF SENSOR IS VARIABLE FROM 100 MM TO 1000MM.
- 9) WHEN 1 LEVER OF 1 ROW IS DOWN SAME ROW INDICATION SIGNAL OPERATE & MACHINE STOP.  
AFTER ANY LEVER OF ANY ROW DROP ITS INDICATION WILL DISABLE UP TO FURTHER LEVER IS IN WORKING.
- 10) DUST PROOF OPEN TYPE. SO IT IS EASY TO CLEAN.
- 11) HOLE TYPE CERAMIC BOTH SIDE OF STOP MOTION FOR AVOID BALLOONING OF YARN.



## STOP MOTION

### SPECIFICATION:-

- 1) DIFFERENT DIMENSION AVAILABLE:-
  - \* PITCH: 150MM TO 350MM
  - \* DECK: 6 TO 10
  - \* ENDS: 384 TO 1500
  - \* LEVER TO LEVER CENTRE: 14.6MM
- 2) OPERATING VOLTAGE: 12VDC.
- 3) OUTPUT TYPE: RELAY NO/NC CONTACT.
- 4) SENSOR TYPE: PHOTOELECTRIC SENSOR

### APPLICATION:-

- 1) FOR SECTORIAL WARPING MACHINE.
- 2) FOR DIRECT WARPING MACHINE.

